



\$50 Gift Cards Available!



Gold Complex Evacuees

711 E Main St, Quincy, CA 95971

(530) 283-2735

first come, first served - while supplies last

Applicants must have the following:



Proof of Residency

Recipients must provide proof of residency within the mandated evacuation areas, such as a government-issued ID or an official bill with address listed.



Proof of Evacuation

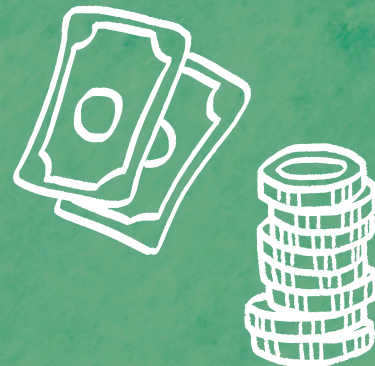
Recipients must provide evidence of having evacuated out of the area, such as a dated receipt from a hotel stay, restaurant out of the area, etc.



Application

Application forms will be available on August 5th while supplies last at the Plumas Crisis Center in Portola and must be completed to receive a \$50 gift card.

The Almanor Foundation provided PRS with \$2,500 to distribute to those individuals who were subject to mandatory evacuations in the Gold Complex Fires in Eastern Plumas County in July. Individuals interested in receiving a \$50 gift card must apply in person on August 5th at Plumas Crisis Center in Portola. Limited to one per household while quantities last.



Plumas Crisis Center
165 Ridge Street
Portola



530-283-2735
ext 830



www.PlumasRuralServices.org